

4338 MOTORSPORTS DR SW

An aerial photograph of a large, single-story industrial building with a grey metal roof and light-colored siding. The building has two blue awnings over the entrances. In front of the building is a paved parking lot with several cars parked, including a black pickup truck, a red sedan, and a white van. The text 'FOR LEASE' is overlaid in large white letters on the building's facade.

FOR LEASE

FOR LEASE

\$3,950 PER MONTH (GROSS)

4338 Motorsports DR | Concord, NC 28027

Parcel ID: Parcel: 55186863350000

-Free standing flex building available for lease in desirable Motorsports Industrial Park. Easy access to Hwy 29, Hwy 49, and I-85

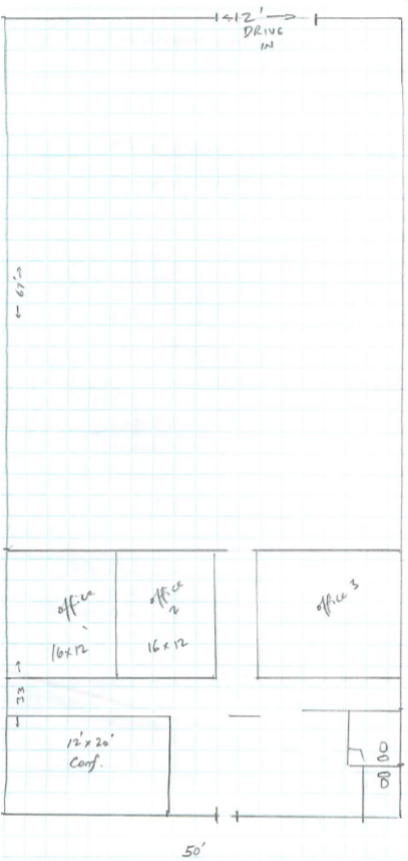
-5,000 SQ FT (3,350 WH/1,650 Office)

-12.25' Clear height at eve

-15.5' Clear height on right side

- \$3,950 PER MONTH (GROSS)
- +/-5,000 SQ FT
- OUTDOOR STORAGE SPACE
- FULLY HEATED AND COOLED
- CONSTRUCTED IN 1997
- 1 DRIVE IN DOOR (16.25'W X 12'H)
- I-1 INDUSTRIAL ZONING

**All information needs to be independently verified.*



Reid Baker
 reidb@newbranchre.com

Harris Morrison
 harrism@newbranchre.com

704-786-8888



new branch
 REAL ESTATE ADVISORS